

LEADERSHIP DEVELOPMENT CONFERENCE



NOVEMBER
16-17,
2024



**CHAUTAUQUA
HARBOR
HOTEL**
CELORON, NY



Register by October 25
WWW.PSEA.ORG/NWLDC



NW REGION LEADERSHIP DEVELOPMENT CONFERENCE

Register Today! www.psea.org/nwldc

Date and Location



NOVEMBER 16-17, 2024

CHAUTAUQUA HARBOR HOTEL

10 DUNHAM AVE

CELORON, NY 14720

(716) 489-2800

QUESTIONS? CONTACT CINDY AT

NW REGION PSEA

CTERLITSKY@PSEA.ORG

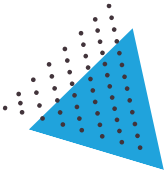
Pricing

YOUR PARTICIPATION MAY BE FUNDED BY YOUR LOCAL ASSOCIATION. BILLING WILL TAKE PLACE AFTER THE CONFERENCE. PLEASE DO NOT MAKE PAYMENT AT THIS TIME FOR ANY OF THE PACKAGE SELECTIONS.

DOUBLE ROOM PACKAGE INCLUDES OVERNIGHT ACCOMMODATIONS WITH DOUBLE OCCUPANCY FOR NOVEMBER 16, MEALS, CONFERENCE MATERIALS, TRAINING, TAXES & GRATUITIES. **PRICE: \$195/PARTICIPANT**

SINGLE ROOM PACKAGE INCLUDES OVERNIGHT ACCOMMODATIONS FOR A SINGLE ROOM FOR NOVEMBER 16, MEALS, CONFERENCE MATERIALS, TRAINING, TAXES & GRATUITIES. **PRICE: \$285/PARTICIPANT**

COMMUTER PACKAGE INCLUDES MEALS, CONFERENCE MATERIALS, TRAINING, TAXES & GRATUITIES. **PRICE: \$105/PARTICIPANT**



Refund Policy

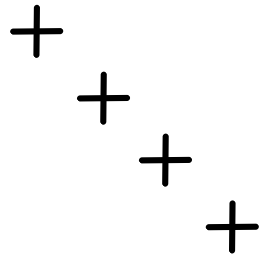
A FULL REFUND WILL BE MADE IF REGISTRATION CANCELLATION IS MADE PRIOR TO OCTOBER 18, 2024. NO REFUNDS CAN BE MADE FOR CANCELLATION REQUESTS RECEIVED AFTER THAT DATE. IF YOU ARE UNABLE TO ATTEND AND NOTIFY US BY OCTOBER 18, 2024, YOU MAY SEND A SUBSTITUTE.



Door Prizes

DOOR PRIZES WILL BE AWARDED IN RANDOM DRAWINGS AT THE CLOSE OF THE CONFERENCE ON SUNDAY, NOVEMBER 17. PARTICIPANTS MUST BE PRESENT TO WIN, SO PLEASE PLAN ON STAYING!

PARTICIPANTS CAN INCREASE THEIR ODDS OF RECEIVING TICKETS TOWARD THE RANDOM DOOR PRIZE DRAWINGS BY ATTENDING THE SESSIONS FOR WHICH THEY ARE PRE-REGISTERED. A DOOR PRIZE DRAWING TICKET WILL ALSO BE GIVEN TO EACH PARTICIPANT UPON REGISTRATION.



NWR LDC CONFERENCE SCHEDULE

Saturday - November 16

REGISTRATION: 10:00 AM - 10:50 AM (THE PRE-FUNCTION)

WHOLE GROUP SESSION: 11:00 AM - 12:00 PM (RICHMOND-DECELERON)
WELCOME/KEYNOTE - BEN HARTRANFT
INCLUSION, KINDNESS, AUTISM ACCEPTANCE AND AWARENESS

BUFFET LUNCH: 12:00 PM - 1:00 PM (THE PARK)

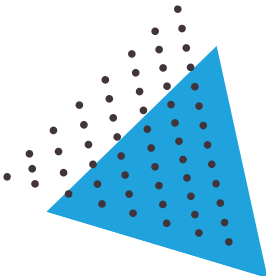


BREAKOUT SESSION 1: 1:15 PM - 2:30 PM

A. BELIEVE: LESSONS IN UNIONISM FROM TED LASSO
(COLUMBIA) STEPHANIE CRAMER, REGION FIELD DIRECTOR, SOUTHERN REGION

B. GRIEVANCE OR A GRIPE?
(LAKEVIEW) BROOKE WITT, REGION FIELD DIRECTOR, MIDWESTERN REGION

C. SCHOOL BOARD ELECTION TRAINING
(IMPERIAL) MARCUS SCHLEGEL, REGION FIELD DIRECTOR, NORTHWESTERN REGION



BREAKOUT SESSION 2: 2:45 PM - 4:00 PM

A. EFFECTIVE COMMUNICATION: HAVING THE HARD CONVERSATIONS
(COLUMBIA) RUSS DAUBERMAN, UNISERV REPRESENTATIVE, NORTHWESTERN REGION

B. DEVELOPING LEADERSHIP THROUGH GENERATIONAL DIVERSITY
(LAKEVIEW) KELLEY CLOUSER, UNISERV REPRESENTATIVE, MIDWESTERN REGION

C. INVESTIGATORY MEETINGS & YOUR RIGHTS
(IMPERIAL) ROB MYERS, UNISERV REPRESENTATIVE, NORTHWESTERN REGION

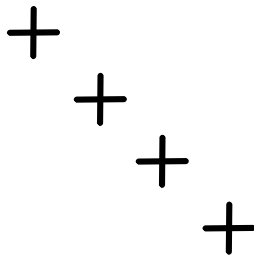
REFRESHMENT/SNACK BREAK 4:00 PM - 4:15 PM

BREAKOUT SESSION 3: 4:15 PM - 5:30 PM

A. COMPENSATION AWARENESS TRAINING
(COLUMBIA) CORY SCHACHERN, UNISERV REPRESENTATIVE, MIDWESTERN REGION

B. ESCAPE ROOM - CREATIVITY IN THE CLASSROOM
(LAKEVIEW) JEFF GRINAWAY, UNISERV REPRESENTATIVE, MIDWESTERN REGION

C. CIVIL RIGHTS AS WORKERS' RIGHTS
(IMPERIAL) MATT EDGELL, UNISERV REPRESENTATIVE, NORTHWESTERN REGION



BUFFET DINNER: 6:30 PM (THE PARK)

ENTERTAINMENT: 7:30 PM COMEDIAN LISA CHIMENTI-FOSTER (RICHMOND-DECELERON)

HOSPITALITY: 8:30 PM - 11:30 PM (THE PRE-FUNCTION)
SNACKS, BEER, WINE (CASH BAR - LIQUOR)



Sunday - November 17

- BREAKFAST BUFFET:** 8:45 AM - 9:30 AM (THE PARK)
- WHOLE GROUP SESSION:** 9:30 AM - 10:15 AM (RICHMOND-DECELERON)
LEADERSHIP JOURNEY
JEFF NEY, VICE-PRESIDENT, PSEA
- LEGAL UPDATE:** 10:15 AM - 11:00 AM (RICHMOND-DECELERON)
ATTORNEY CAROLYN FUNKHOUSER, NORTHWESTERN REGION
- WRAP UP:** 11:00AM - 11:30 AM (RICHMOND-DECELERON)



NWR LDC Conference Session Descriptors



BREAKOUT SESSION 1: 1:15 PM - 2:30 PM

A. BELIEVE: LESSONS IN UNIONISM FROM TED LASSO

Union leaders and members must engage in self-reflection as they work to build union power. The ability to empathize with others and establish healthy relationships is key. Excellent examples of these skills are seen in the popular TV show, Ted Lasso. In this interactive session, we will explore clips from the show, and relate them to our work as unionists. The union values portrayed in the show, and how they relate to PSEA's Mission, Vision, and Values, are a key focus of this session.

B. GRIEVANCE OR A GRIPE?

Sometimes, it's hard to tell! This session will explore the grievance process, with a focus on investigations and creative problem solving to ensure all avenues are vetted. The goal? To help participants understand how to get the best results when an issue arises (grievance or not) through efficient, effective and collaborative processes. We will also discuss grievance strategies and processing when all else fails!

C. SCHOOL BOARD ELECTION TRAINING

Almost nothing has the potential to impact the quality of your work life and economic security as much as your local school board. Hiring administrators, setting budgets, purchasing resources, choosing curriculum – all of these things are determined by just nine people who run your school district. Whatever state and federal legislation may come to pass, your school board has the power to mitigate or exacerbate how it affects you and your fellow members.


The good news is that you have the power to improve your schools, your contract, and your lives by recruiting and supporting good school board members. We'll discuss the basics of election timelines, what makes a successful candidate, and how PSEA-PACE can support your efforts.

Help good candidates get on the ballot and on the board! We'll show you how.

BREAKOUT SESSION 2: 2:45 PM - 4:00 PM

A. EFFECTIVE COMMUNICATION: HAVING THE HARD CONVERSATIONS

It is a myth that some people are born to be effective communicators and others are not. Every single one of us can learn to be an effective communicator. It is human nature to avoid difficult conversations, but union leaders must talk with irrational administrators, disgruntled members, and hostile non-members on a daily basis. Perhaps even worse, union leaders often must give members unwelcome news they do not want to hear. This session will offer the skills, tactics, and practice necessary for having these hard conversations.



B. DEVELOPING LEADERSHIP THROUGH GENERATIONAL DIVERSITY

This session will focus on two crucial elements of building a strong local - developing strong leaders and learning the composition of your membership, specifically focusing on generational diversity. In our locals today, we have members spanning four or even five generations. How do you discover emerging leaders and cultivate a culture of positive leadership in your union across such diverse generational experiences? We encourage you to enter this session with an open mind as we explore the best ways to build effective and engaging leaders.

C. INVESTIGATORY MEETINGS & YOUR RIGHTS

This workshop will provide an overview of investigatory meetings with a focus on the rights established for union employees and union representatives during these encounters.

BREAKOUT SESSION 3: 4:15 PM - 5:30 PM

A. COMPENSATION AWARENESS TRAINING

Module 1: Theory and Structure of Salary Schedules - We will investigate the history and structure of salary schedules in PA and examine the underlying labor/economic theory behind our typical salary schedules in PSEA locals.

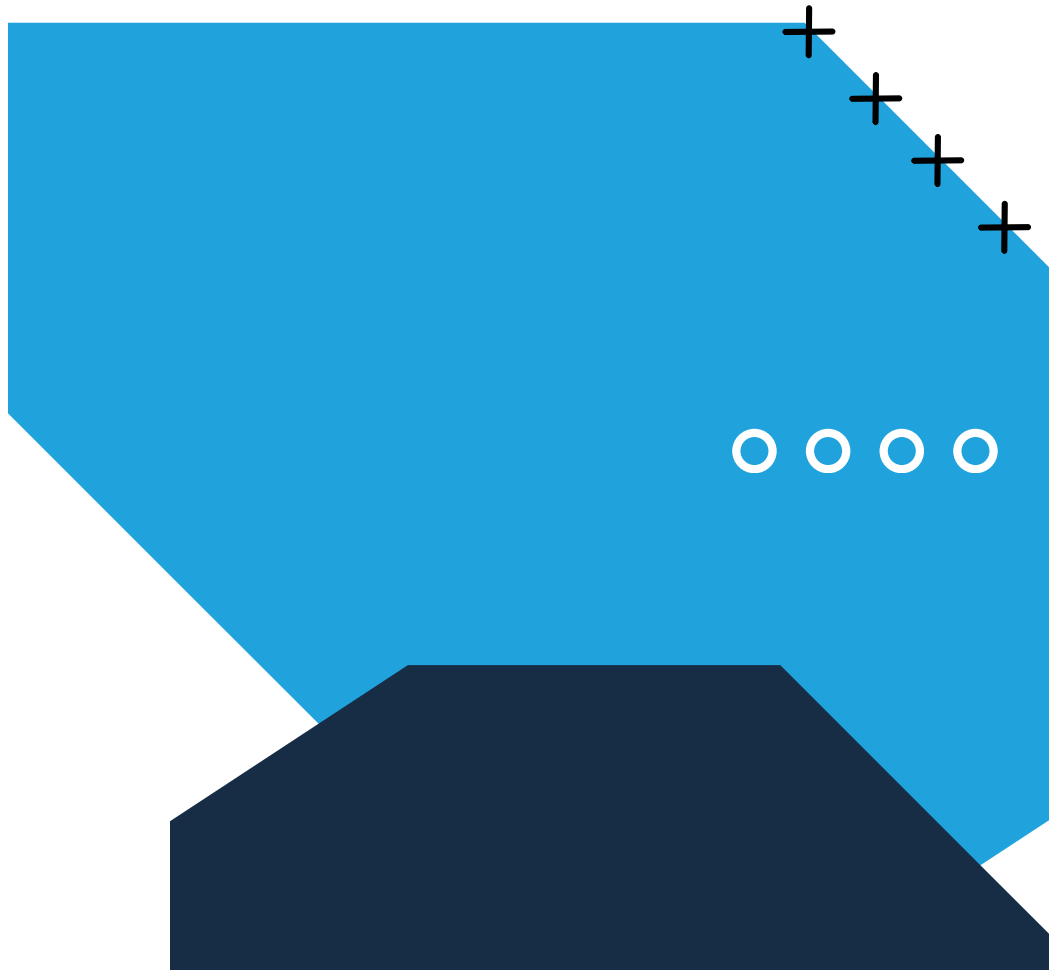
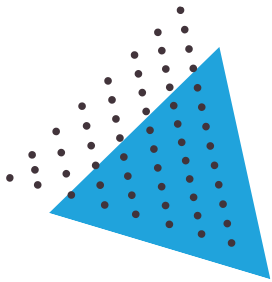
Module 2: Matrix, Movement, and Cost - This session details how the total labor costs for our bargaining units are calculated, explains step movement and their association with raises, and details how important the matrix is to successful bargaining.

B. ESCAPE ROOM - CREATIVITY IN THE CLASSROOM

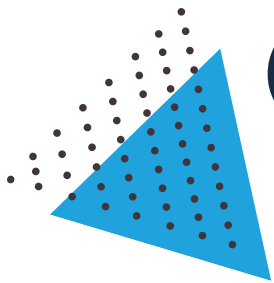
Solve the puzzles ~ Find the key ~ Escape the room. Participants will have 60 minutes to escape the room. When used in the classroom, this learning tool is part education, part team-building exercise and part problem solving, all while teaching students about their curriculum. (Limited to 28 participants)

C. CIVIL RIGHTS AS WORKERS' RIGHTS

Did you know that the Atlanta Washer Women strike in 1881 was one of the largest labor movements in Southern History? This presentation explores the history and relationship between Civil Rights and Workers' Rights.



WE HOPE TO SEE YOU AT THIS YEAR'S CONFERENCE!



Please feel free to contact Cindy Terlitsky with any questions.

cterlitsky@psea.org ● 814.734.3711

Registration Deadline - October 25

WWW.PSEA.ORG/NWLDC



Scan to register!

